



Getting Started with Breeze eDiscovery Suite

***Introduction to Breeze Workflow:
Deduplication: Eliminating Duplicate Native Files
in Data Sets***

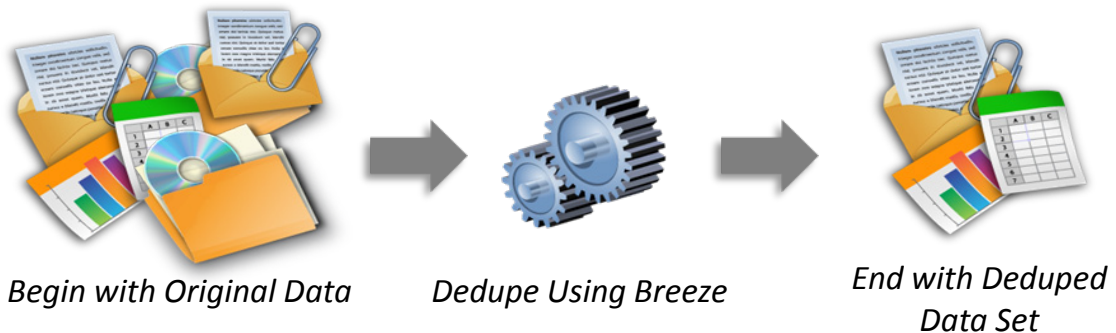


breeze

Deduplication

Eliminate Duplicate Native Files in a Data Set

Breeze deduplicates native files either (1) within one data set or (2) across multiple data sets. See the explanations below to learn the difference between the two dedupe options. The dedupe options can only be performed on the output volume after it has been processed using either the “Convert Native Files to TIF” or “Create Native Load Files” options.



Option 1: Create Dedupe Master



Dedupe a single data set. This option will remove duplicates across the one selected data set. The “Create Dedupe Master” also designates the selected volume as the Master Dedupe Database. Subsequent databases will be deduped against this database to eliminate duplicate files across multiple data sets. A dedupe report is automatically generated in the Dedupe Master Volume.

Option 2: Dedupe Against Master



This option allows the user to eliminate duplicates which exist in a subsequent data set. Breeze compares files in the subsequent data set against the files in the Master Dedupe Database (aka the original data set). When duplicates are found, the dupes are omitted from the updated load files. The new duplicates are automatically added to the report inside the Dedupe Master Volume.

When might you deduplicate a data set?

Before TIF Conversion – When duplicate files are eliminated, less files will be processed to TIF. This saves time during the conversion process.

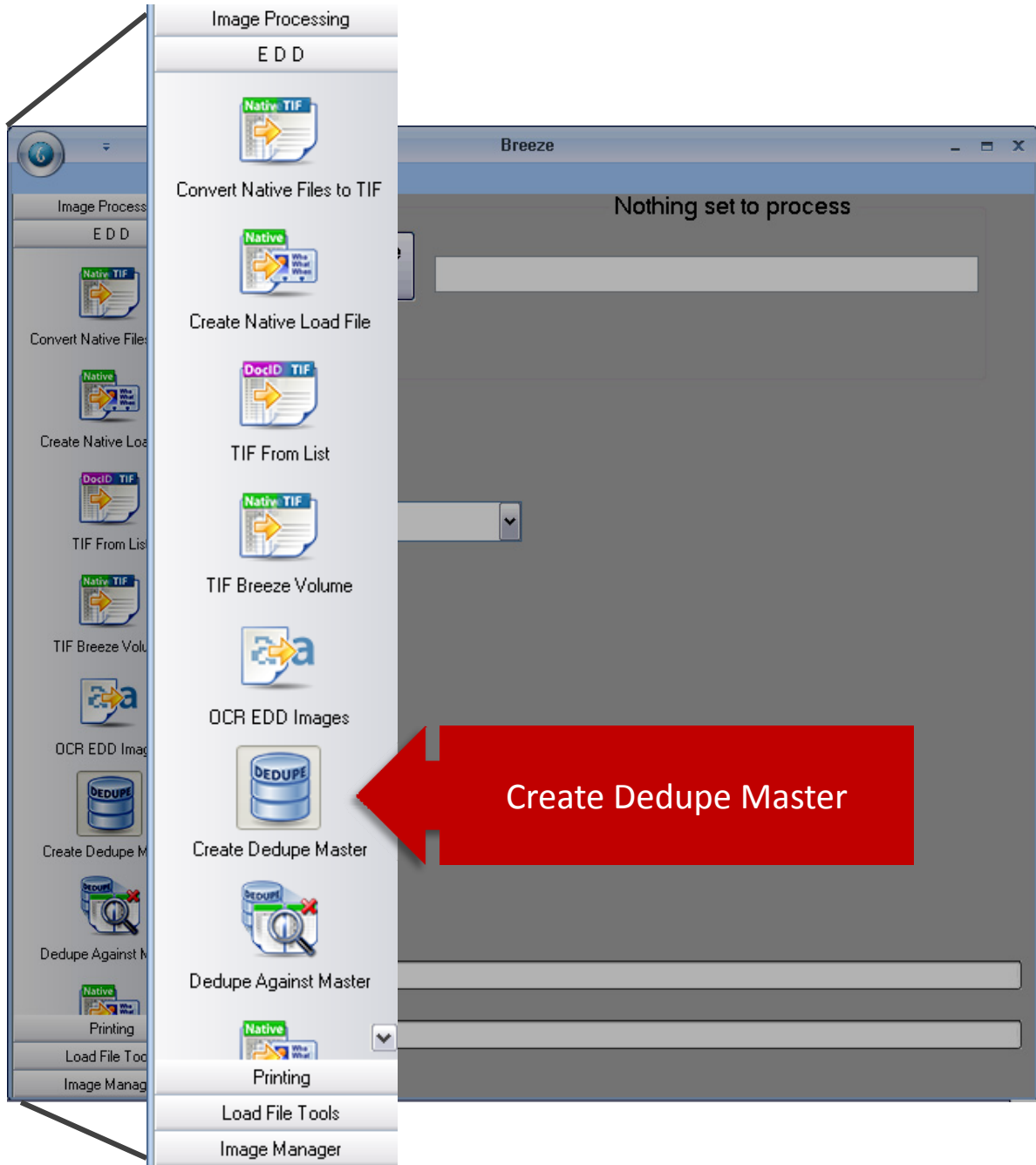
Eliminate Data Dump – A production cluttered with duplicate files can be considered a data dump. Making the decision to eliminate duplicates quells the “Data Dump” claim, e.g. – company icons saved in an email footer.

Prior to Native Review – Eliminating duplicate files results in a smaller data set. The smaller data set will take reviewers less time to cull through the native files, e.g. – the same spreadsheet attached to multiple emails in a PST.

All of the steps required to complete each process are outlined in the Breeze eDiscovery Suite Users’ Guide

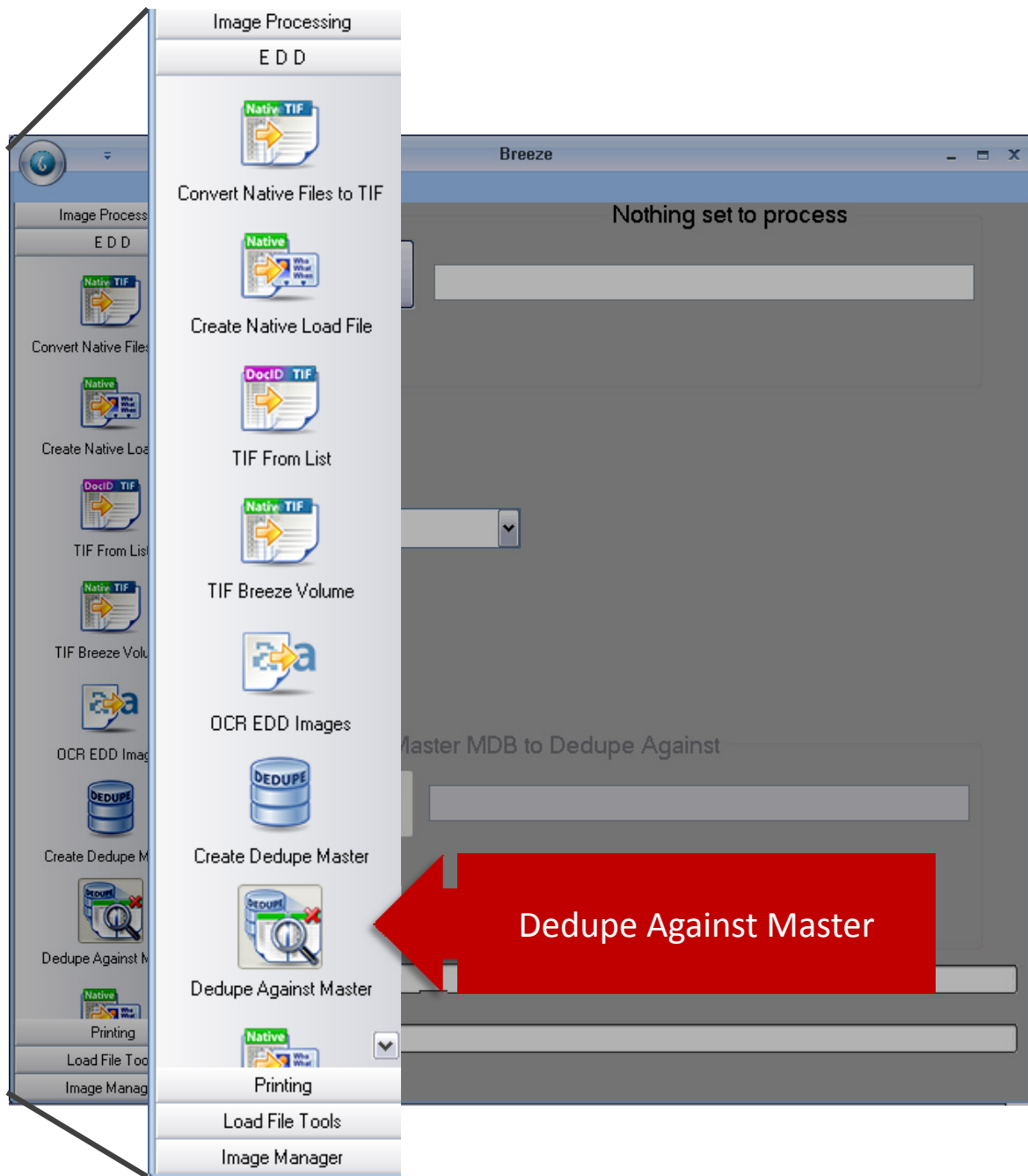
Deduplication

Option 1: Create Dedupe Master



Deduplication

Option 2: Dedupe Against Master



Breeze Technical Support Resources

*Check the many ways Breeze Lit can help you
Do It Yourself!*

- Call Support: 888-470-0621 ext. 11
- Email Support: support@BreezeLit.com
- Download the [Breeze eDiscovery Suite User Guide.pdf](#)
- Visit the [Breeze eDiscovery Suite Online Training Room](#) to learn at your own pace

Check out our DIY Blog
Focusing on Real World
Questions from Breeze Users

