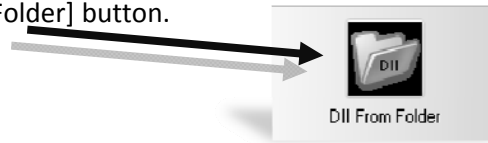


DII from Folder

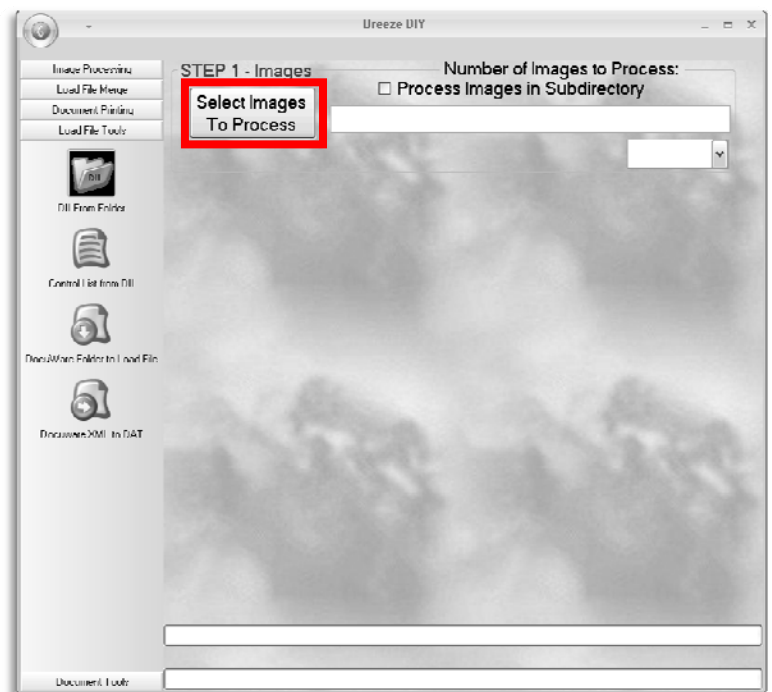
Point Breeze to a directory of image files to create a .DII load file instantly.

To begin, click on the [DII From Folder] button.



Step 1 - Images

- (1) Click on the [Select Images to Process] button
- (2) Browse to the volume or folder which contains the files you wish to create the .DII and click [OK]



GO

Once all of the required settings are set, the [GO] button will appear. Click the [GO] button to start the conversion. After the .DII file is created, you will receive a status box.