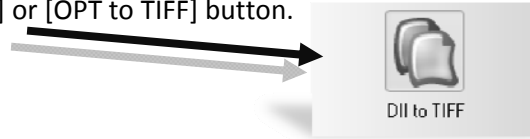


Load File Merge – DII or OPT to TIFF

The "DII to TIFF" and "OPT to TIFF" options use load files to merge single-page image files into multi-page TIF files.

To begin, click on the [DII to TIFF] or [OPT to TIFF] button.

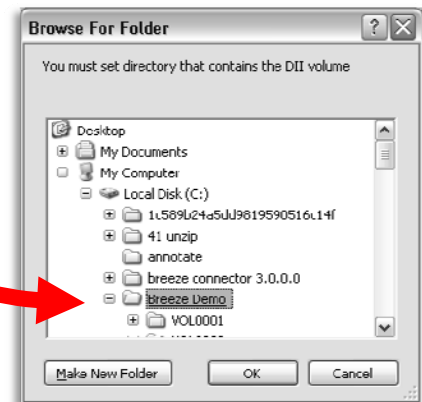


Step 1 – Images

- (1) Click on the [Select DII to Convert] button
- (2) Browse to the volume which contains the .dii or .opt file you wish to convert click [Open]
- (3) Select the directory which contains the load file volume (one folder level above the folder which contains the .dii/.opt volume).



***This example shows VOL0001.DII volume being converted. The user will select the folder above VOL0001 which is Breeze Demo (as shown).



Step 2 – Output

Output Location

- (3) **Set Output Location** – Click this button to browse to the output folder you wish to use. You are able to create a new folder in a directory by clicking [New Folder]; You are also able to type in the path if it is known
- (4) **Use Source Directory Structure** – Check mark this option to tell Breeze to recreate the original folder structure in the output and save the processed images as they were saved in the original folders



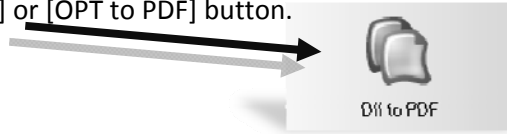
GO

Once all of the required settings are set, the [GO] button will appear. Click the [GO] button to start the conversion. After the conversion is complete, you will receive a status box.

Load File Merge – DII or OPT to PDF

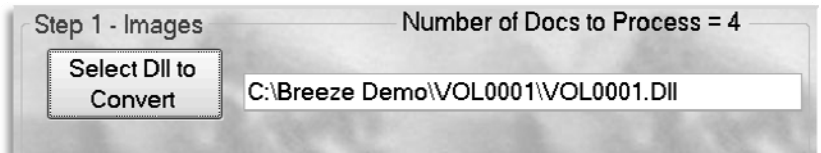
The "DII to PDF" and "OPT to PDF" options use a DII file to merge single-page TIF files into multi-page PDF files.

To begin, click on the [DII to PDF] or [OPT to PDF] button.

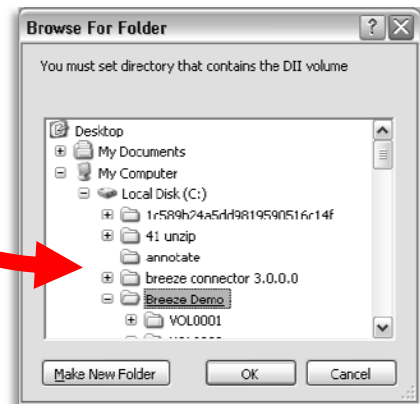


Step 1 – Images

- (1) Click on the [Select DII to Convert] button
- (2) Browse to the volume which contains the .dii or .opt file you wish to convert click [Open]
- (3) Select the directory which contains the load file volume (one folder level above the folder which contains the .dii/.opt volume).



***This example shows VOL0001.DII volume being converted. The user will select the folder above VOL0001 which is Breeze Demo (as shown).



Step 2 – Output

Output Location

- (1) **Set Output Location** – Click this button to browse to the output folder you wish to use. You are able to create a new folder in a directory by clicking [New Folder]; You are also able to type in the path if it is known
- (2) **Use Source Directory Structure** – Check mark this option to tell Breeze to recreate the original folder structure in the output and save the processed images as they were saved in the original folders



GO

Once all of the required settings are set, the [GO] button will appear. Click the [GO] button to start the conversion. After the conversion is complete, you will receive a status box.