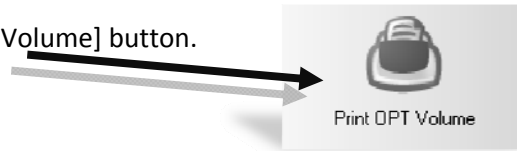


Print OPT Volume

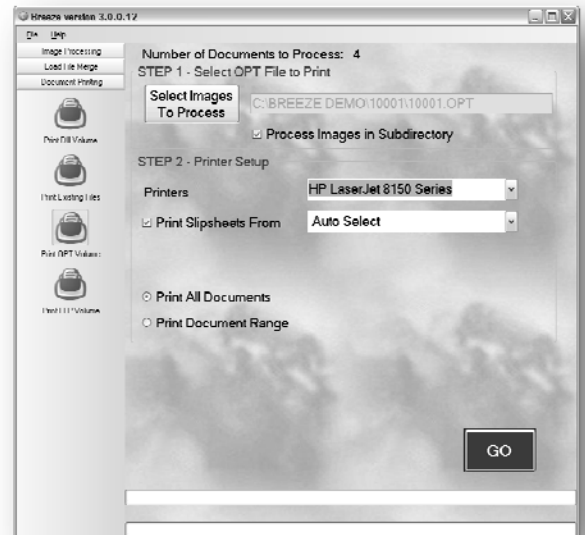
The "Print OPT Volume" allows the user to print documents using a .OPT load file.

To begin, click on the [Print OPT Volume] button.



Step 1 – Select OPT File to Print

- (1) Click on the [Select Images to Process] button
- (2) Browse to and select the .OPT volume you wish to print and click [OK].
- (3) Select the directory which contains the .OPT volume (one folder level above the folder which contains the .OPT volume)



Step 2 – Printer Setup

- (1) Select the printer you wish to use from the pull down menu
- (2) Check mark the box next to "Print Slipsheets" and select the drawer you wish to print the slipsheets from (as shown)
- (3) Choose between printing all of the documents in the directory or a range of documents in the directory
- (4) Select [GO] to begin printing

